

Plusrite®

LED TRI PROOF LINEAR BATTEN RANGE



NEW COLOUR TEMPERATURE CHANGEABLE BATTEN LIGHTS



SL-TRI-CDT86F20
SL-TRI-CDT86F20/S



SL-TRI-CDT170F40
SL-TRI-CDT170F40/S

Key Features



- Batten with motion sensor (optional), motion detection up to 10 meters, no motion detection after 30 seconds, it will drop to 10% lumen output.
- Long life, Unique design provides 50,000 hours life.
- Easy replacement and installation.
- Frosted cover to decrease the glare.
- SMD2835 LED chips with high efficiency.
- IP65 and IK10 Rated with 3 year warranty.
- Colour Temperature 4K 6K Changeable.
- Working temperature: -20°C to 40°C

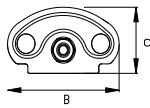
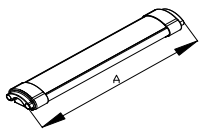


Applications

- Office, Shops, Warehouse, Car parking area, Home, Supermarket, etc.

Model.	LED Type	LED Q'ty (pcs)	Colour Temperature	Voltage (V)	Beam Angle	Wattage (W)	Luminosity (lm)	CRI(Ra)	Frame colour	MOTION SENSOR	IK RATING	IP RATING	Dimmable
SL-TRI-CDT86F20	SMD2835	86pcs	4K 6K	200~265V	120°	20W	1800lm	>80	White	NO	IK10	IP65	NO
* SL-TRI-CDT86F20/S	SMD2835	86pcs	4K 6K	200~265V	120°	20W	1800lm	>80	White	YES	IK10	IP65	NO
SL-TRI-CDT170F40	SMD2835	170pcs	4K 6K	200~265V	120°	40W	3600lm	>80	White	NO	IK10	IP65	NO
* SL-TRI-CDT170F40/S	SMD2835	170pcs	4K 6K	200~265V	120°	40W	3600lm	>80	White	YES	IK10	IP65	NO

*S: Microwave Motion Sensor



Model	Size A(mm)	Size B(mm)	Size C(mm)
SL-TRI-CDT86F20	608	84	46
SL-TRI-CDT86F20/S	608	84	46
SL-TRI-CDT170F40	1218	84	46
SL-TRI-CDT170F40/S	1218	84	46

Product: SL-TRI-CDT86F20
SL-TRI-CDT86F20/S

Net Weight: 0.82 kg

Outer ctn size: 688*380*225mm

Q'ty per ctn: 16 pcs

G.W per ctn: 14 kg

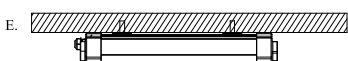
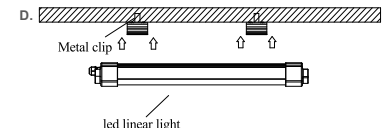
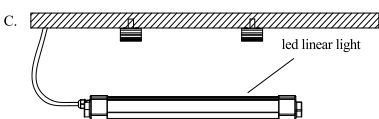
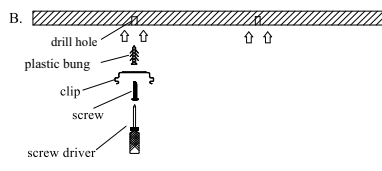
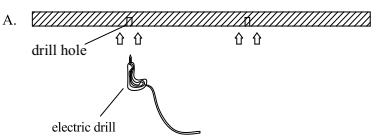
Product: SL-TRI-CDT170F40
SL-TRI-CDT170F40/S

Net Weight: 1.40 kg

Outer ctn size: 1298*380*225mm

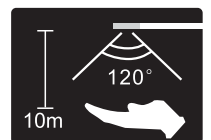
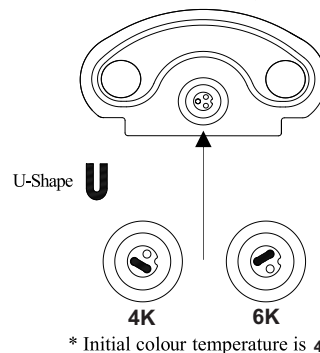
Q'ty per ctn: 16 pcs

G.W per ctn: 23.9 kg



Installation

Colour Temperature adjust by U-Shape



Microwave Sensor

- ★ Detection angle: 120°
- ★ Detection distance: 10m